

See discussions, stats, and author profiles for this publication at: <https://www.researchgate.net/publication/320243675>

THE IMPACT OF THE POSITION OF THE HYDRAULIC CYLINDER MOUNTING POINT ON THE CHASSIS LOAD IN MOBILE ELEVATING WORK PLATFORMS

Conference Paper · May 2017

CITATION

1

READS

412

4 authors, including:



Nebojša Zdravković

University of Kragujevac

66 PUBLICATIONS 146 CITATIONS

[SEE PROFILE](#)



Goran Markovic

Faculty of Mechanical and Civil Engineering in Kraljevo, University of Kragujevac

48 PUBLICATIONS 53 CITATIONS

[SEE PROFILE](#)



Goran V. Pavlovic

University of Niš

56 PUBLICATIONS 108 CITATIONS

[SEE PROFILE](#)

Some of the authors of this publication are also working on these related projects:



Stability Analysis in Elastic States of Very Slender Columns [View project](#)



Stability of Beams, Frames, and Trusses [View project](#)

THE IMPACT OF THE POSITION OF THE HYDRAULIC CYLINDER MOUNTING POINT ON THE CHASSIS LOAD IN MOBILE ELEVATING WORK PLATFORMS

Nebojša ZDRAVKOVIĆ¹

Mile SAVKOVIĆ¹

Goran MARKOVIĆ¹

Goran PAVLOVIĆ²

¹⁾ Faculty of Mechanical and Civil Engineering in Kraljevo,
University of Kragujevac

²⁾ Lola Institute, Belgrade, Serbia

Abstract

The paper deals with the structural analysis of the typical mobile elevating work platform moving quasi-statically in the vertical plane. With certain approximations included, a model for calculating load transmission from the basket to the support on the vehicle chassis has been developed. It allows tracking changeable load conditions for each structural element, as well as tracking force changes in each hydraulic cylinder of the articulating boom, depending on the angles of boom joints and the geometric parameters of boom sections. Derived analytical dependences can be used as the basis for design and optimization of the hydraulic installation and hydraulic component selection. On the other hand, the functions obtained enable position adjustment of the hydraulic cylinder mounting point of the first section in order to reduce the load impact on the chassis.

Key words: mobile elevating work platform, articulating boom, load transmission, chassis load

1 INTRODUCTION

A hoisting device that provides temporary access of men and equipment to hardly reachable spots, which are placed at certain heights (from a few meters to several tens of meters), is called hydraulic elevating platform. The most often in use are the hydraulic elevating platforms mounted on vehicle. Such machine is called Mobile Elevating Work Platform - MEWP [1].

The advantage in exploitation often goes to hydraulic elevating platforms with articulating booms, which are

typical representatives of structures with variable geometry [2] (Fig.1), in contemporary urban conditions, just because of configuration of terrain which has lot of obstacles such as street lights, traffic signs, advertising panels, trees, electric, phone and other public installations, parked cars and other objects.



Fig. 1 MEWP boom types: telescopic, articulating and combined boom type

The most important parameters of an elevating platform are, besides the lifting capacity, working height and horizontal reach (Fig. 2).

Named application features distinct them from hoisting devices with permanent access to working places and put them into special purpose construction hoisters.

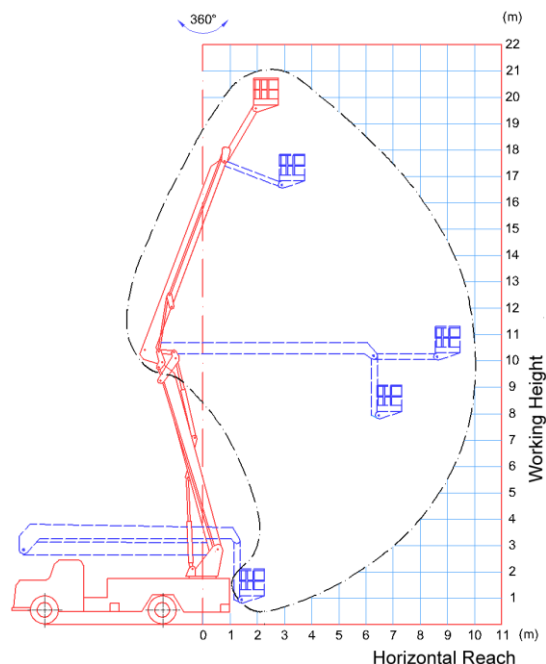


Fig. 2 Working diagram of MEWP

2 CALCULATION MODEL

Fig. 3 depicts various configurations of MEWP articulated boom while approximated model for calculation and structural analysis of MEWP articulated boom in relation to basket position is partially shown in Figure 4. Sections lengths and appropriate boom joint angles determine basket position within the work range (lifting

height and horizontal reach). The angles defining basket position are those that sections enclose with constant directions: α_1 and α_2 are the angles that sections 1 and 2 enclose with the horizontal direction and α_3 is the angle that section 3 encloses with the vertical direction. Each section is attached to the local (separate) movable coordinate system $(\xi_i, \eta_i, \zeta_i, i=1,2,3)$, at which the coordinate origin is placed at the joint connection with the previous section and ξ_i axes are perpendicular to the figure plane. At the section 1 support, that is the whole boom support, the global coordinate system $AXYZ$ is set. Table 1 shows constrained values of boom sections angles.

Table 1 Constrained values of boom sections angles

$\alpha_1 [^\circ]$	0					
	45					
	75					
$\alpha_2 [^\circ]$	-60	-30	0	15	45	70
$\alpha_3 [^\circ]$	0÷20	0÷50	0÷80	15÷95	45÷125	70÷150

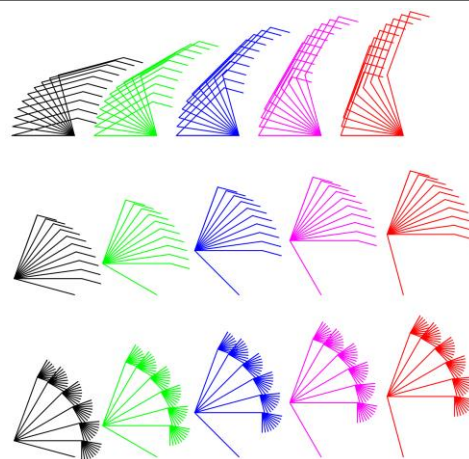


Fig. 3 Various configurations of MEWP boom

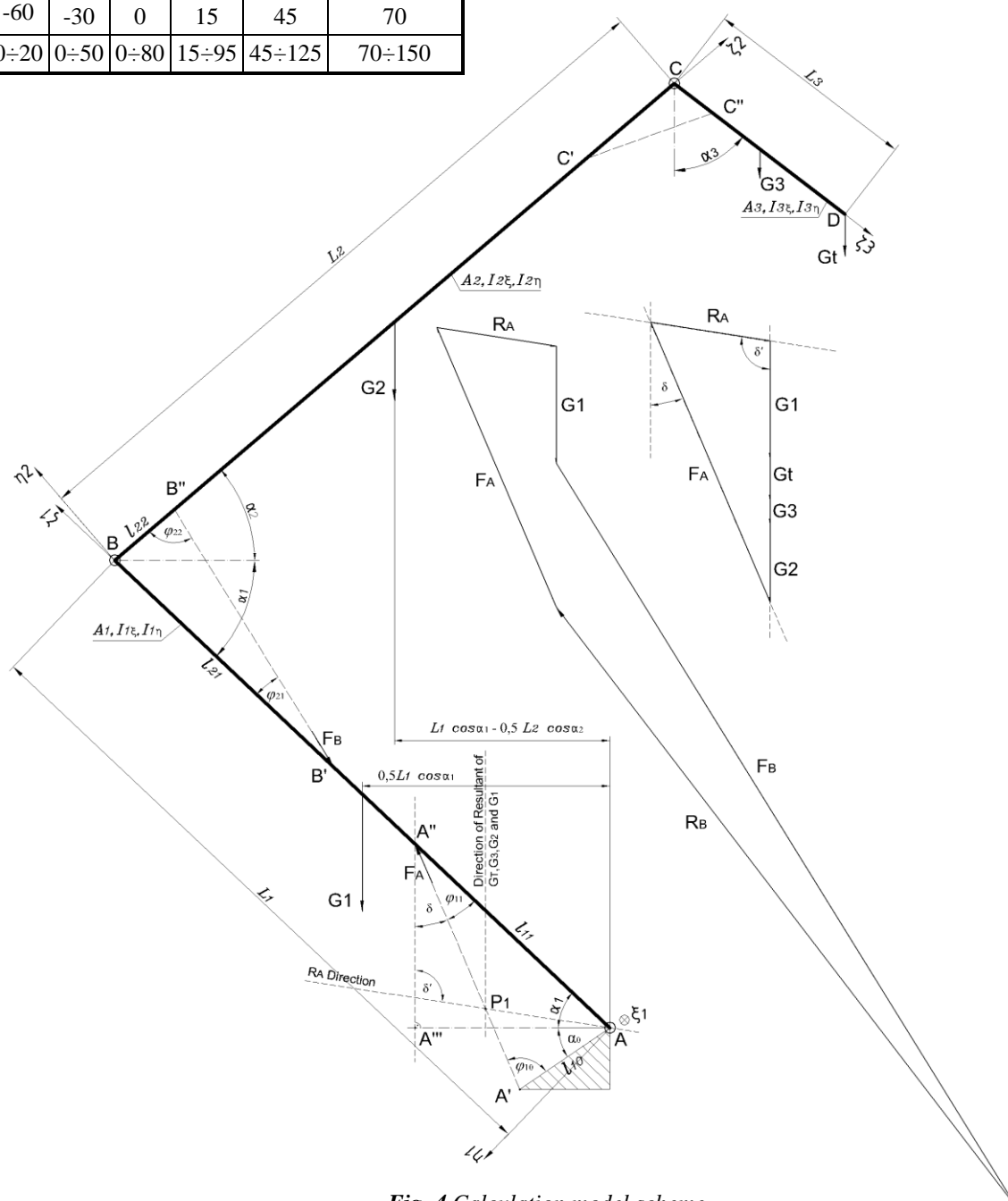


Fig. 4 Calculation model scheme

Complete analysis of presented model can be found in [3], where obtained analytical dependencies enable designer to use limited endpoint displacement ($f < f_{allowed}$) as a constraint function for optimization in order to reduce mass of the structure [4-7]. Based on detailed scheme of section 1 in Fig. 4, force in hydraulic cylinder F_A was determined from moment equation for support A :

$$\begin{aligned} &hl_1 \cos \alpha_1 (0,5G_1 + G_2 + G_3 + G_T) - \\ &-l_2 \cos \alpha_2 (0,5G_2 + G_3 + G_T) - \\ &-l_3 \sin \alpha_3 (0,5G_3 + G_T) = F_A l_{11} \sin \varphi_{11} \end{aligned} \quad (1)$$

$$\text{where } \sin \varphi_{11} = \frac{l_{10} \sin(\alpha_1 + \alpha_0)}{\sqrt{l_{10}^2 + l_{11}^2 - 2l_{10}l_{11} \cos(\alpha_1 + \alpha_0)}}.$$

Reaction of boom support in joint A is obtained as follows:

$$R_A = \sqrt{(G_1 + G_2 + G_3 + G_T)^2 + F_A^2 - 2(G_1 + G_2 + G_3 + G_T)F_A \cos \delta} \quad (2)$$

where $\cos \delta = \sin(\varphi_{11} + \alpha_1)$. All the forces should be projected on the local coordinate system $A\xi_I\eta_I\zeta_I$ in order to obtain the diagram of section 1 loads. After certain angle transformations and equation substitutions, we get the expressions for the force in the hydraulic cylinder and section 1 loads:

$$\begin{aligned} R_{A\eta I} &= \frac{l_1}{l_{11}} (G_T + \frac{G_1}{2} + G_2 + G_3) \cos \alpha_1 - \\ &\frac{l_2}{l_{11}} (G_T + \frac{G_2}{2} + G_3) \cos \alpha_2 - \\ &-\frac{l_3}{l_{11}} (G_T + \frac{G_3}{2}) \sin \alpha_3 - (G_T + G_1 + G_2 + G_3) \cos \alpha_1 \end{aligned} \quad (3)$$

$$\begin{aligned} R_{A\xi I} &= (G_1 + G_2 + G_3 + G_T) \sin \alpha_1 - \\ &-\frac{l_{11} - l_{10} \cos(\alpha_1 + \alpha_0)}{l_{11}l_{10} \sin(\alpha_1 + \alpha_0)} \cdot [-l_2 (G_T + \frac{G_2}{2} + G_3) \cos \alpha_2 + \\ &+ l_1 (G_T + \frac{G_1}{2} + G_2 + G_3) \cos \alpha_1 - l_3 \sin \alpha_3 (\frac{G_3}{2} + G_T)] \end{aligned} \quad (4)$$

$$\begin{aligned} F_A &= \frac{\sqrt{l_{10}^2 + l_{11}^2 - 2l_{10}l_{11} \cos(\alpha_1 + \alpha_0)}}{l_{10}l_{11} \sin(\alpha_1 + \alpha_0)} \cdot \\ &\cdot [l_1 \cos \alpha_1 (0,5G_1 + G_2 + G_3 + G_T) - \\ &l_2 \cos \alpha_2 (0,5G_2 + G_3 + G_T) - l_3 \sin \alpha_3 (0,5G_3 + G_T)] \end{aligned} \quad (5)$$

$$\begin{aligned} F_{A\eta I} &= -\frac{l_1}{l_{11}} (G_T + \frac{G_1}{2} + G_2 + G_3) \cos \alpha_1 + \\ &+\frac{l_2}{l_{11}} (G_T + \frac{G_2}{2} + G_3) \cos \alpha_2 + \frac{l_3}{l_{11}} \sin \alpha_3 (\frac{G_3}{2} + G_T) \end{aligned} \quad (6)$$

$$\begin{aligned} F_{A\xi I} &= \frac{l_{11} - l_{10} \cos(\alpha_1 + \alpha_0)}{l_{11}l_{10} \sin(\alpha_1 + \alpha_0)} \cdot \\ &\cdot [l_1 (G_T + \frac{G_1}{2} + G_2 + G_3) \cos \alpha_1 - \\ &-l_2 (G_T + \frac{G_2}{2} + G_3) \cos \alpha_2 - l_3 \sin \alpha_3 (\frac{G_3}{2} + G_T)] \end{aligned} \quad (7)$$

3 VARIATION OF THE MOUNTING POINT POSITION AND ITS INFLUENCE ON THE FORCE VALUES ACTING ON THE CHASSIS

The further analysis of influence of the mounting point position of the hydraulic cilinder on the forces acting upon chassis was conducted for the geometry configuration of the MEWP articulated boom with maximum horizontal reach, i.e. $\alpha_1 = 75^\circ, \alpha_2 = 0^\circ, \alpha_3 = 80^\circ$. Fig. 5 shows the position of hydraulic cylinder mounting point in polar coordinates with the origin in support A.

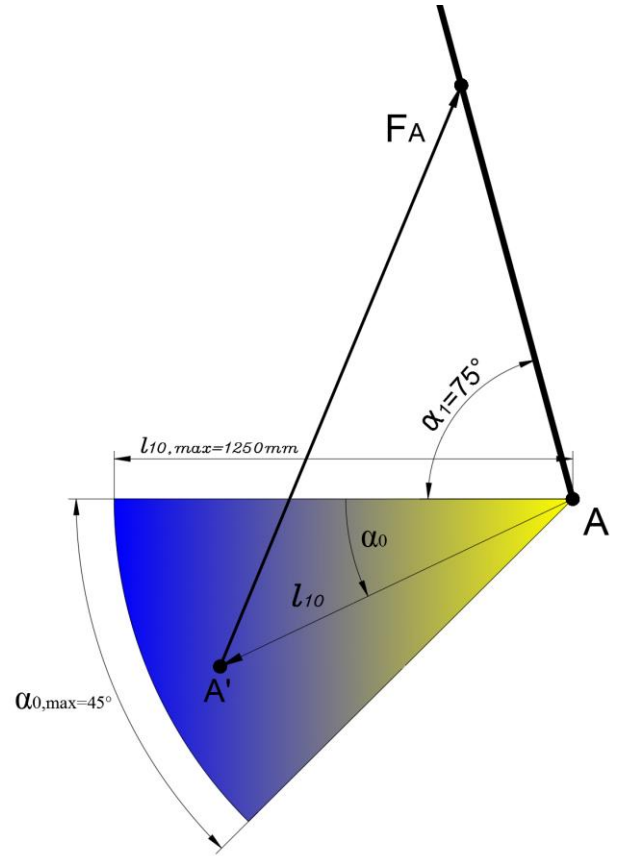


Fig. 5 Position of hydraulic cylinder mounting point in polar coordinates

The following numerical values for diagram plotting purpose were used:

$$\begin{aligned} L_1 &= 7602\text{mm}, L_2 = 8210\text{mm}, \\ &_3 = 2400\text{mm}, l_{33} = 540\text{mm}, \\ l_{32} &= 1288\text{mm}, l_{22} = 876\text{mm}, \\ l_{21} &= 3361\text{mm}, l_{11} = 2987\text{mm}, \\ G_1 &= 15\text{kN}, G_2 = 10\text{kN}, G_3 = 4\text{kN}, G_T = 5\text{kN} \end{aligned}$$

Polar coordinates of the hydraulic cylindr mounting point position were taken within ranges of $\alpha_0 = [0^\circ \div 45^\circ]$ and $l_{10} = [500\text{mm} \div 1250\text{mm}]$.

Numerical calculations were carried out by MATLAB software routines and the results of the gained dependances are presented in the following diagrams.

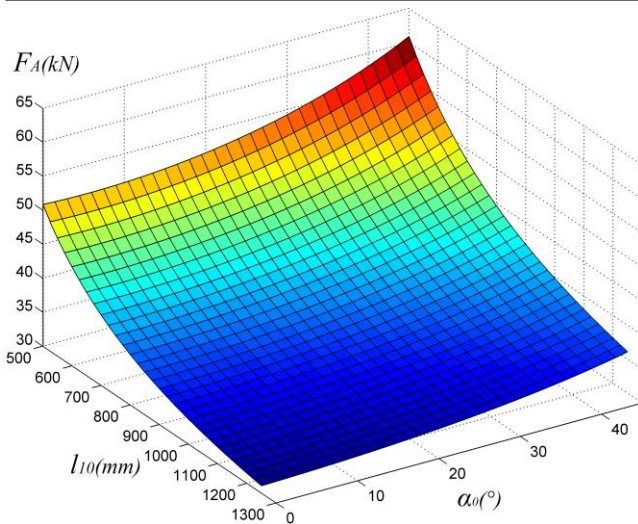


Fig. 6 The impact of the position of hydraulic cylinder mounting point on its force

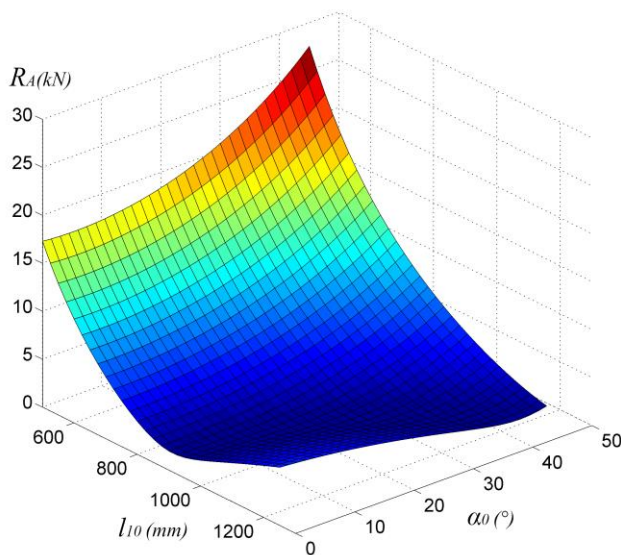


Fig. 7 The impact of the position of hydraulic cylinder mounting point on reaction force in boom support A

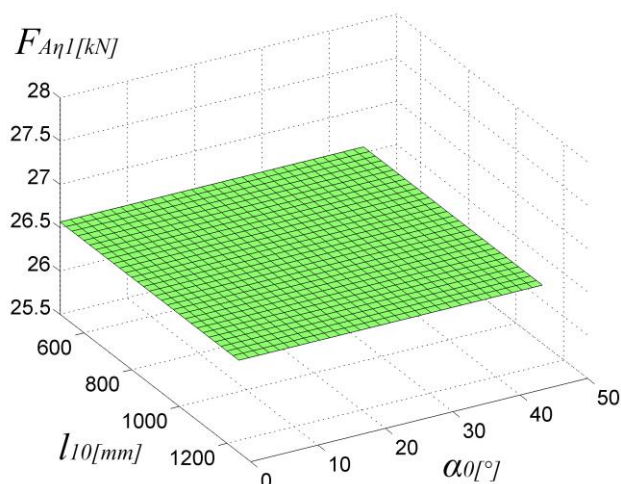


Fig. 8 Component of hydraulic cylinder force perpendicular to section 1 longitudinal axis

4 CONCLUSION

As expected, the values of the forces acting upon MEWP chassis in the hydraulic cylinder mounting point and the first

section support A change with the variation of the mounting point position considerably. In order to achieve the needed value of its component which is perpendicular to the longitudinal axis of section 1 (Fig. 8), by which the moment equilibrium is maintained, the overall force in the hydraulic cylinder F_A (Fig. 6) increases as the distance l_{10} decreases and the angle α_0 increases. This has the consequence in similar behaviour of the force value R_A in support A (Fig. 7). The final decision on the position of the mounting point can be made in relation to the operational parameters of the hydraulic cylinder, such as stroke and rated maximum force.

ACKNOWLEDGMENT

This work was supported by the Ministry of Education, Science and Technological Development of the Republic of Serbia (Project TR35038).

REFERENCES

1. Radoičić, G., 2006, *Experimental testing of vibro-confort on mobile elevating work platform*, Research and Design in Commerce & Industry, No. 11, year IV(2006), pp 25-35, ISSN 1451-4117.
2. Bošnjak, S., Zrnić, N., Dragović, B., 2009, *Dynamic Response of Mobile Elevating Work Platform under Wind Excitation*, Strojniški vestnik - Journal of Mechanical Engineering, Vol. 55, No. 2 (2009), pp 104-113. ISSN 0039-2480.
3. Zdravković N., Gašić M., Savković M., Petrović D., 2011, *Research of the force values dependences in hydro cylinders of the mobile elevating work platform articulated boom on the work position and load weight*, Proceedings of the 7th international conference research and development of mechanical elements and systems IRMES2011, p.271-278, Zlatibor, Serbia, ISBN 978-86-6055-012-7
4. Gasic M, Savkovic M, Bulatovic R, Petrovic R., 2011, *Optimization of a pentagonal cross section of the truck crane boom using Lagrange's multipliers and differential evolution algorithm*, Meccanica 46:845–853. doi:10.1007/s11012-010-9343-7
5. Gasic, M., Savkovic, M., Bulatovic, R., 2011, *Optimization of trapezoidal cross section of the truck crane boom by Lagrange's multipliers and by differential evolution algorithm (de)*, Strojniški vestnik – Journal of Mechanical Engineering, 57(2011)4, 304-312, doi: 10.5545/sv-jme.2008.029
6. Pinca BC, Tirian OG, Socalici VA, Ardelean DE, 2009, *Dimensional optimization for the strength structure of a traveling crane*, WSEAS Transactions on Applied and theoretical Mechanics 4 (4), pp 147:156
7. Selmic, R., Cvetkovic, R., Mijailovic, R., 2006, *Optimization of crosssection in structures*, Monograph, The Faculty of Transport and Traffic Engineering, Belgrade.

Contact address:

Nebojša Zdravković,

Faculty of Mechanical and Civil Engineering in Kraljevo,
Dositejeva 19, 36000 Kraljevo